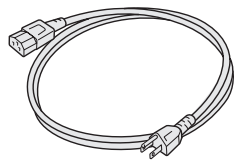


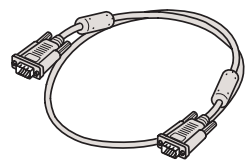
START HERE

Connect the projector to your notebook

- 1 Locate the required cables:

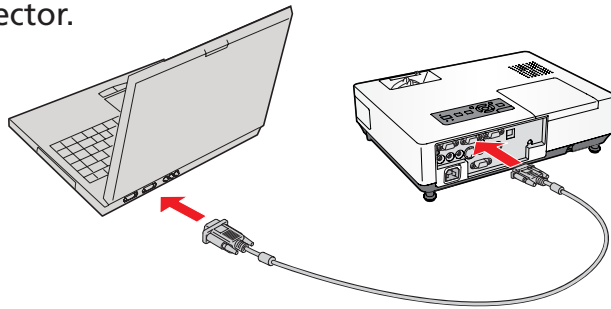


Power cord



VGA computer cable

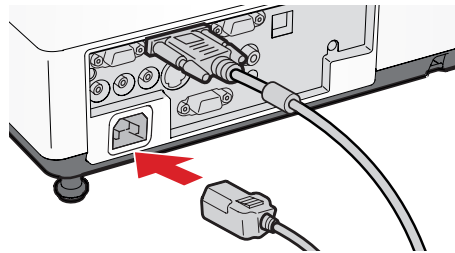
- 2 Connect the computer cable to the blue **Computer1** port on the projector.



- 3 Connect the other end to your notebook's video-out or monitor port.

NOTE: If your notebook has a DVI connector, you need to use an optional DVI-to-VGA adapter with the included computer cable (see your computer's documentation).

- 4 Connect the power cord to the projector, then plug the other end into an electrical outlet.



Before using the projector, make sure you read the safety instructions in the *User's Guide* on your projector CD.

Follow these instructions to connect the projector to your notebook. For other setup options, see your *User's Guide*.



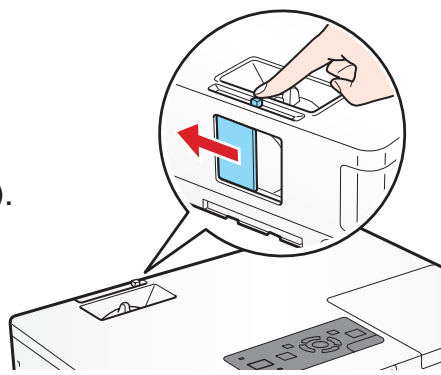
EPSON
EXCEED YOUR VISION

Turn on your equipment

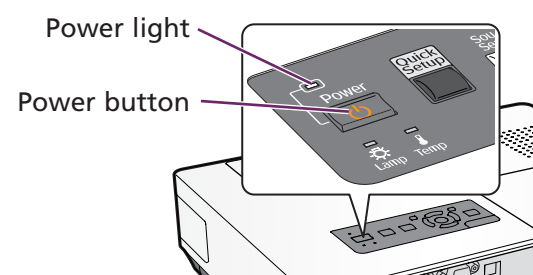
- 1 Turn on your notebook.

- 2 Open the **AV Mute** slide (lens cover).

NOTE: The slide must be opened completely.



- 3 Make sure the **Power** light is orange and not flashing.



- 4 Press the **Power** button to turn on the projector.

To shut down the projector:

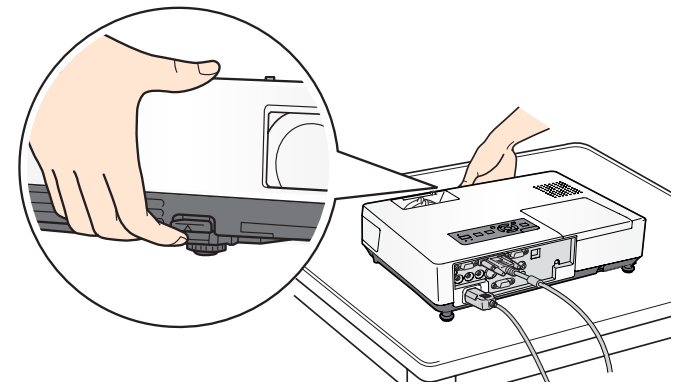
1. Press the **Power** button twice.
2. When the orange light stops flashing and the projector beeps, you can unplug the projector.

Adjust the image

- 1 If you've turned on your notebook and you don't see an image, press the **Source Search** button on the projector or the **Search** button on the remote control to select the image source.

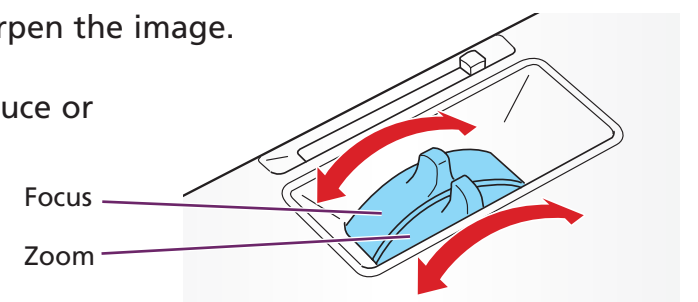
NOTE: If you still see a blank screen or have other display problems, see the troubleshooting tips on the back of this sheet.

- 2 To raise the image, press the foot release button for the front adjustable foot and lift the front. Release the button to lock the foot in position.



- 3 Turn the focus ring to sharpen the image.

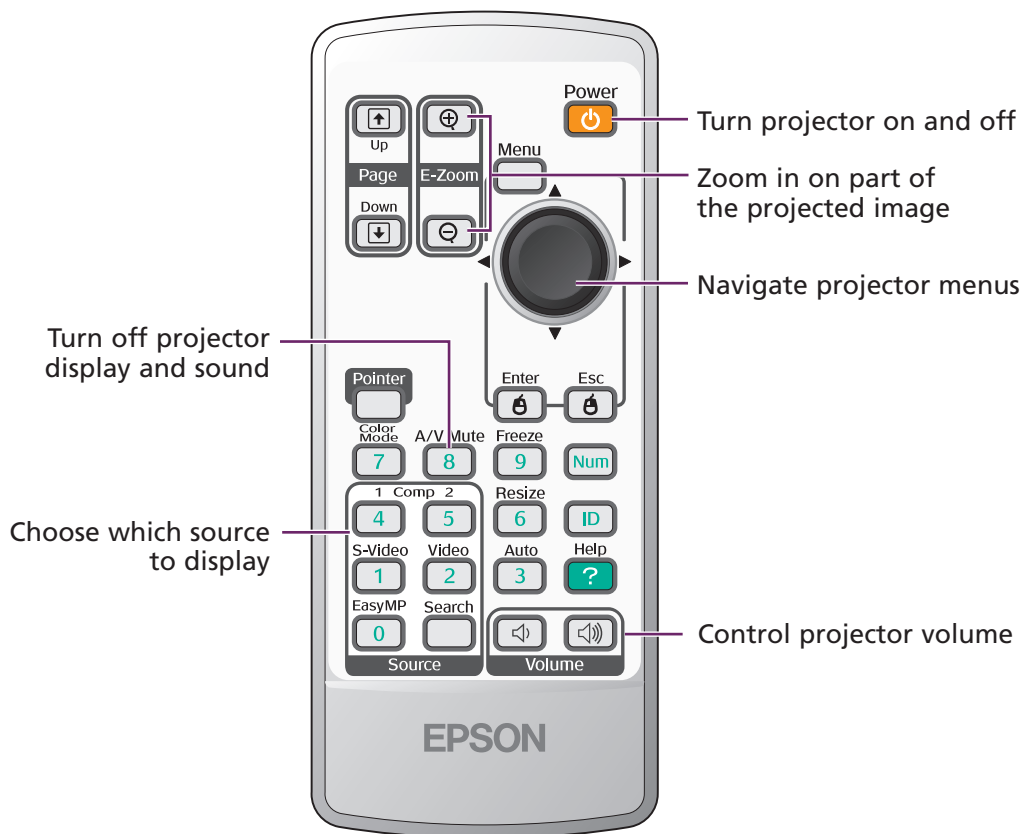
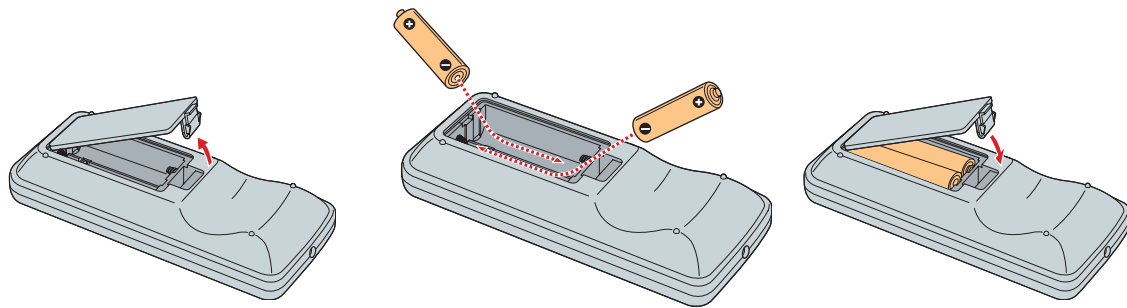
Turn the zoom ring to reduce or enlarge the image.



- 4 If your image looks like , , , or , press the **Quick Setup** button on the projector and follow the on-screen instructions.

Using the remote control

If this is your first time using the remote, make sure its batteries are installed as shown (two AAA batteries).



You can use the remote control to operate the projector. With the USB cable, you can use the remote as a wireless mouse. For more information on using the remote control, see your *User's Guide*.

Where to get help

Telephone Support Services

To use the Epson PrivateLine® Support service, call (800) 637-7661 and enter the PIN on the Epson PrivateLine Support card included with your projector. This service is available 6 AM to 6 PM, Pacific Time, Monday through Friday, for the duration of your warranty period. You may also speak with a projector support specialist by dialing one of these numbers:

U.S.: (562) 276-4394, 6 AM to 6 PM, Pacific Time, Monday through Friday
Canada: (905) 709-3839, 6 AM to 6 PM, Pacific Time, Monday through Friday

Toll or long distance charges may apply.

Internet Support

Visit Epson's support website at epson.com/support and select your product for solutions to common problems. You can download utilities and documentation, get FAQs and troubleshooting advice, or e-mail Epson with your questions.

Visit <http://www.presentersonline.com> to access tips, templates, and training for developing successful presentations.

Register today to get product updates, special promotions, and customer-only offers. You can use the registration card or CD included with your projector, or register online at www.epson.com/webreg.

Troubleshooting

If you see a blank screen...

If you see a blank screen or the **No signal** message after turning on your notebook, check the following:

- Make sure the **Power** light on the projector is green and not flashing, and the **A/V Mute** slide (lens cover) is open.
- Press the **Source Search** button on the projector or the **Search** button on the remote control to select the computer as the image source.
- If you're using a Windows® notebook, press the function key on your keyboard that lets you display on an external monitor. It may be labeled **CRT/LCD** or have an icon such as . You may have to hold down the **Fn** key while pressing it. Allow a few seconds for the projector to sync up after changing the setting.

If the projector and notebook don't display the same image...

If your image displays either on the projector or notebook, but not on both, check the following:

Windows

Try using the **CRT/LCD** or key as described above. On most systems, this key lets you toggle between the LCD screen and the projector, or display on both at the same time.

If that doesn't work, check your monitor settings to make sure both the LCD screen and the external monitor port are enabled.

1. From the Windows Control Panel, open the **Display** utility. In Windows Vista™, right-click on the desktop and select **Personalize**, then select **Display Settings**.
2. In the Display Properties dialog box, click the **Settings** tab, then click **Advanced**. In Windows Vista, click **Advanced Settings**.
3. The method for adjusting the setting varies; you may have to click a **Monitor** tab, then make sure the external Monitor port is set as your primary display and/or enabled. See your notebook's manual or online help for details.



Macintosh® OS X

1. From the Apple® menu, select **System Preferences**, then select **Displays**.
2. Select the **VGA Display** or **Color LCD** dialog box.
3. Click the **Arrangement** (or **Arrange**) tab and click **Mirror Displays**.

